



MONACO

YACHT CLUB & RESIDENCES
MIAMI BEACH

Residence A

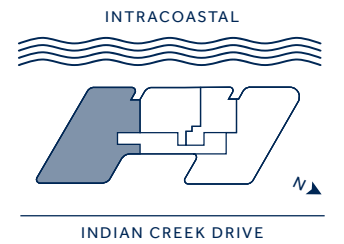
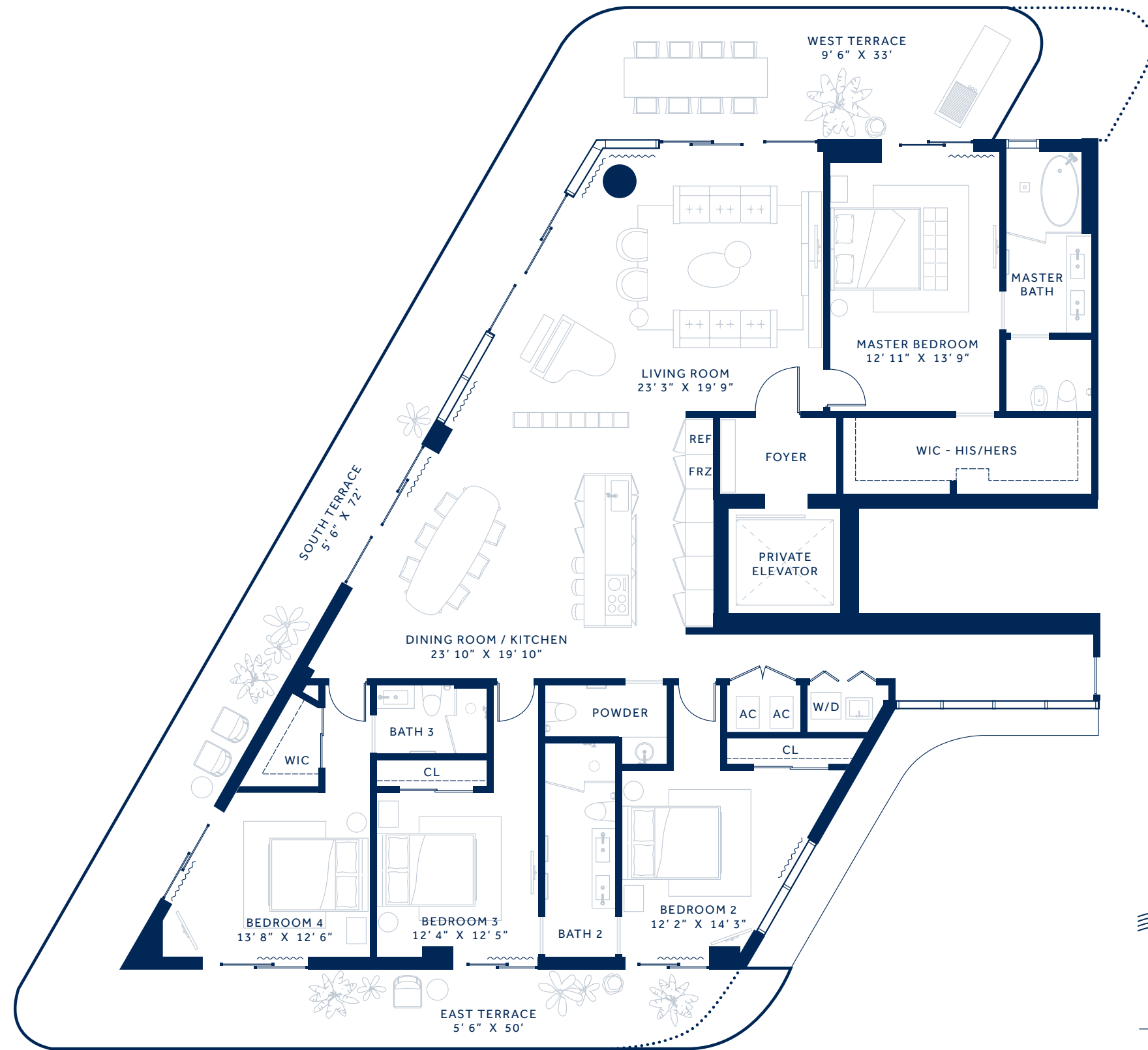
4 BEDROOMS
3.5 BATHROOMS
PRIVATE TERRACE

FLOORS 2, 4, 6, 8, 10

INTERIOR	2,844 SQ FT	264 SQ M
EXTERIOR	1,130 SQ FT	105 SQ M
TOTAL	3,974 SQ FT	369 SQ M

FLOORS 3, 5, 7, 9

INTERIOR	2,844 SQ FT	264 SQ M
EXTERIOR	1,190 SQ FT	110 SQ M
TOTAL	4,034 SQ FT	374 SQ M



ORAL REPRESENTATIONS CANNOT BE RELIED UPON AS CORRECTLY STATING THE REPRESENTATIONS OF THE DEVELOPER. FOR CORRECT REPRESENTATIONS, MAKE REFERENCE TO THIS BROCHURE AND TO THE DOCUMENTS REQUIRED BY SECTION 718.503, FLORIDA STATUTES, TO BE FURNISHED BY A DEVELOPER TO A BUYER OR LESSEE.

Stated square footages and dimensions are measured to the exterior boundaries of the exterior walls and the centerline of interior demising walls and in fact vary from the square footage and dimensions that would be determined by using the description and definition of the "Unit" set forth in the Declaration (which generally only includes the interior airspace between the perimeter walls and excludes all interior structural components and other common elements). This method is generally used in sales materials and is provided to allow a prospective buyer to compare the Units with units in other condominium projects that utilize the same method. For your reference, the area of the Unit, determined in accordance with these defined unit boundaries, is 2,844 sq ft. Measurements of rooms set forth on this Floor plan are generally taken at the farthest points of each given room (as if the room were a perfect rectangle), without regard for any cutouts or variations. Accordingly, the area of the actual room will typically be smaller than the product obtained by multiplying the stated length and width. All dimensions are estimates which will vary with actual construction, and all floor plans, specifications and other development plans are subject to change and will not necessarily accurately reflect the final plans and specifications for the development. All depictions of appliances, counters, soffits, floor coverings and other matters of detail, including, without limitation, items of finish and decoration, are conceptual only and are not necessarily included in each Unit.



MONACO

YACHT CLUB & RESIDENCES
MIAMI BEACH

Residence B

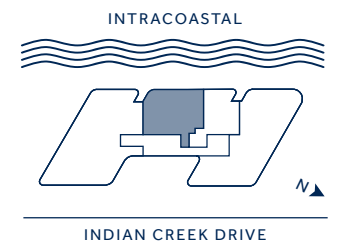
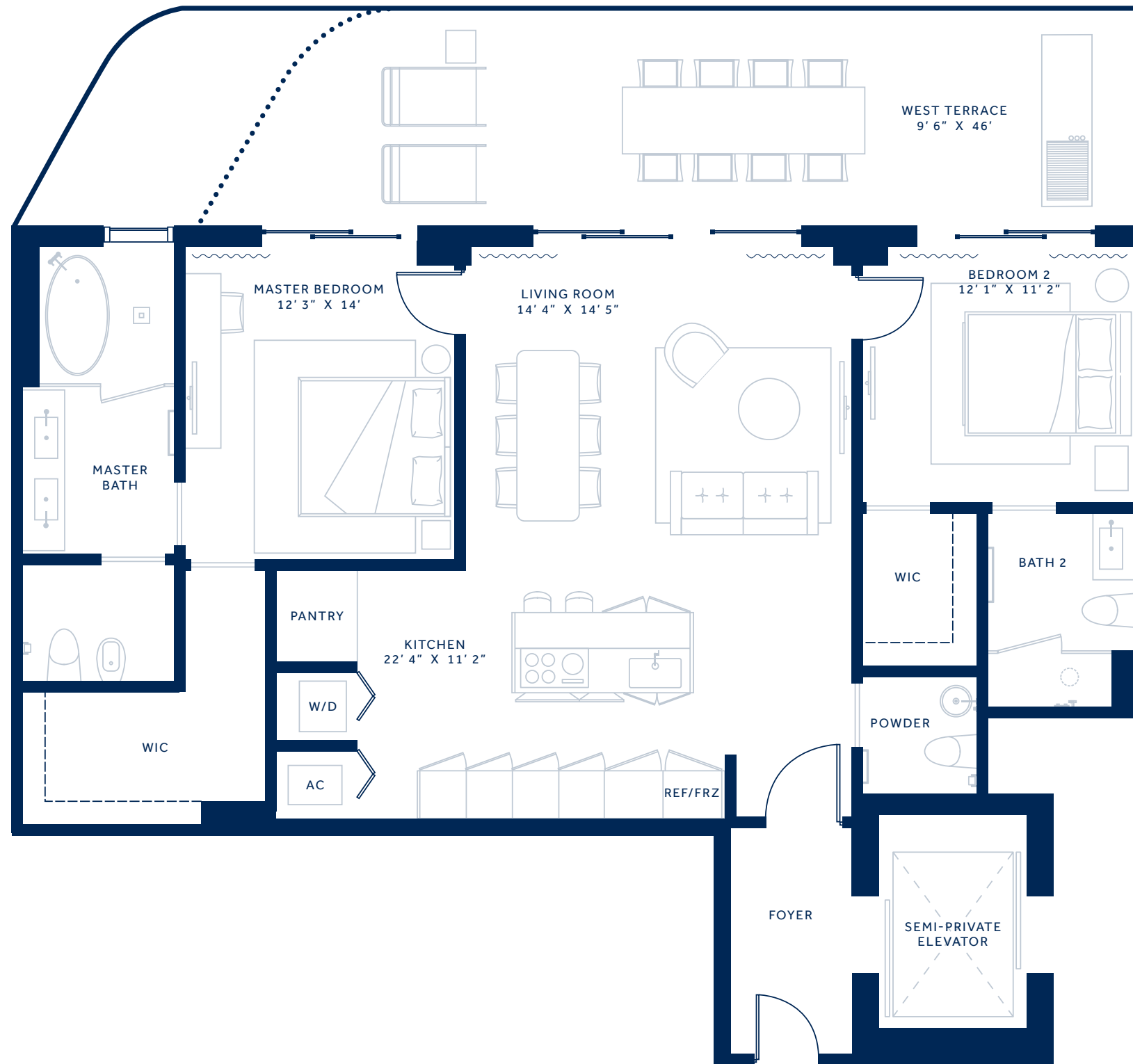
2 BEDROOMS
2.5 BATHROOMS
PRIVATE TERRACE

FLOORS 2, 4, 6, 8, 10

INTERIOR	1,386 SQ FT	129 SQ M
EXTERIOR	475 SQ FT	44 SQ M
TOTAL	1,861 SQ FT	173 SQ M

FLOORS 3, 5, 7, 9

INTERIOR	1,386 SQ FT	129 SQ M
EXTERIOR	394 SQ FT	36 SQ M
TOTAL	1,780 SQ FT	165 SQ M



6800 INDIAN CREEK DRIVE
MIAMI BEACH, FL 33141
T. 305.800.6800

MONACOYACHTCLUBRESIDENCES.COM



ORAL REPRESENTATIONS CANNOT BE RELIED UPON AS CORRECTLY STATING THE REPRESENTATIONS OF THE DEVELOPER. FOR CORRECT REPRESENTATIONS, MAKE REFERENCE TO THIS BROCHURE AND TO THE DOCUMENTS REQUIRED BY SECTION 718.503, FLORIDA STATUTES, TO BE FURNISHED BY A DEVELOPER TO A BUYER OR LESSEE.

Stated square footages and dimensions are measured to the exterior boundaries of the exterior walls and the centerline of interior demising walls and in fact vary from the square footage and dimensions that would be determined by using the description and definition of the "Unit" set forth in the Declaration (which generally only includes the interior airspace between the perimeter walls and excludes all interior structural components and other common elements). This method is generally used in sales materials and is provided to allow a prospective buyer to compare the Units with units in other condominium projects that utilize the same method. For your reference, the area of the Unit, determined in accordance with these defined unit boundaries, is 1,386 sq ft. Measurements of rooms set forth on this floor plan are generally taken at the farthest points of each given room (as if the room were a perfect rectangle), without regard for any cutouts or variations. Accordingly, the area of the actual room will typically be smaller than the product obtained by multiplying the stated length and width. All dimensions are estimates which will vary with actual construction, and all floor plans, specifications and other development plans are subject to change and will not necessarily accurately reflect the final plans and specifications for the development. All depictions of appliances, counters, soffits, floor coverings and other matters of detail, including, without limitation, items of finish and decoration, are conceptual only and are not necessarily included in each Unit.

Residence C

1 BEDROOM
1.5 BATHROOMS
PRIVATE TERRACE

FLOORS 2, 4, 6, 8, 10

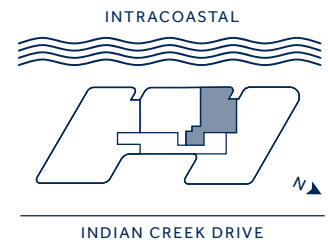
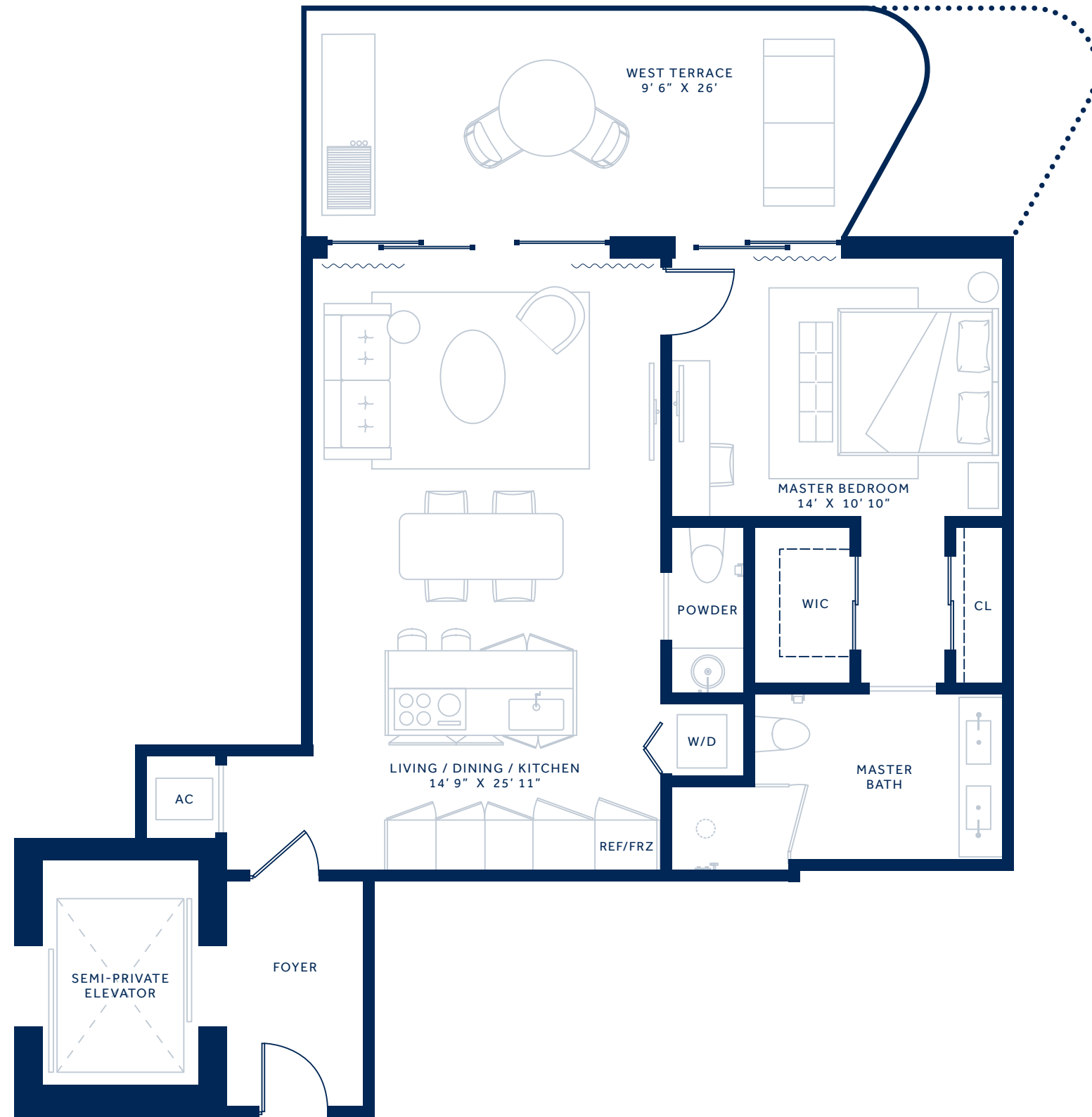
INTERIOR	918 SQ FT	85 SQ M
EXTERIOR	252 SQ FT	23 SQ M
TOTAL	1,170 SQ FT	108 SQ M

FLOORS 3, 5, 7, 9

INTERIOR	918 SQ FT	85 SQ M
EXTERIOR	333 SQ FT	31 SQ M
TOTAL	1,251 SQ FT	116 SQ M

6800 INDIAN CREEK DRIVE
MIAMI BEACH, FL 33141
T. 305.800.6800

MONACOYACHTCLUBRESIDENCES.COM



ORAL REPRESENTATIONS CANNOT BE RELIED UPON AS CORRECTLY STATING THE REPRESENTATIONS OF THE DEVELOPER. FOR CORRECT REPRESENTATIONS, MAKE REFERENCE TO THIS BROCHURE AND TO THE DOCUMENTS REQUIRED BY SECTION 718.503, FLORIDA STATUTES, TO BE FURNISHED BY A DEVELOPER TO A BUYER OR LESSEE.

Stated square footages and dimensions are measured to the exterior boundaries of the exterior walls and the centerline of interior demising walls and in fact vary from the square footage and dimensions that would be determined by using the description and definition of the "Unit" set forth in the Declaration (which generally only includes the interior airspace between the perimeter walls and excludes all interior structural components and other common elements). This method is generally used in sales materials and is provided to allow a prospective buyer to compare the Units with units in other condominium projects that utilize the same method. For your reference, the area of the Unit, determined in accordance with these defined unit boundaries, is 918 sq ft. Measurements of rooms set forth on this floor plan are generally taken at the farthest points of each given room (as if the room were a perfect rectangle), without regard for any cutouts or variations. Accordingly, the area of the actual room will typically be smaller than the product obtained by multiplying the stated length and width. All dimensions are estimates which will vary with actual construction, and all floor plans, specifications and other development plans are subject to change and will not necessarily accurately reflect the final plans and specifications for the development. All depictions of appliances, counters, soffits, floor coverings and other matters of detail, including, without limitation, items of finish and decoration, are conceptual only and are not necessarily included in each Unit.

Residence D

3 BEDROOMS
3.5 BATHROOMS
PRIVATE TERRACE

FLOORS 2, 4, 6, 8, 10

INTERIOR	2,422 SQ FT	225 SQ M
EXTERIOR	1,261 SQ FT	117 SQ M
TOTAL	3,683 SQ FT	342 SQ M

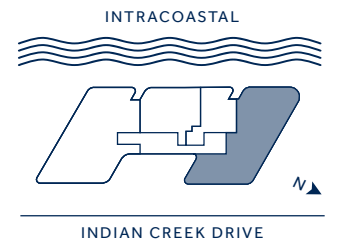
FLOORS 3, 5, 7, 9

INTERIOR	2,422 SQ FT	225 SQ M
EXTERIOR	1,201 SQ FT	112 SQ M
TOTAL	3,623 SQ FT	337 SQ M



6800 INDIAN CREEK DRIVE
MIAMI BEACH, FL 33141
T. 305.800.6800

MONACOYACHTCLUBRESIDENCES.COM



ORAL REPRESENTATIONS CANNOT BE RELIED UPON AS CORRECTLY STATING THE REPRESENTATIONS OF THE DEVELOPER. FOR CORRECT REPRESENTATIONS, MAKE REFERENCE TO THIS BROCHURE AND TO THE DOCUMENTS REQUIRED BY SECTION 718.503, FLORIDA STATUTES, TO BE FURNISHED BY A DEVELOPER TO A BUYER OR LESSEE.

Stated square footages and dimensions are measured to the exterior boundaries of the exterior walls and the centerline of interior demising walls and in fact vary from the square footage and dimensions that would be determined by using the description and definition of the "Unit" set forth in the Declaration (which generally only includes the interior airspace between the perimeter walls and excludes all interior structural components and other common elements). This method is generally used in sales materials and is provided to allow a prospective buyer to compare the Units with units in other condominium projects that utilize the same method. For your reference, the area of the Unit, determined in accordance with these defined unit boundaries, is 2,422 sq ft. Measurements of rooms set forth on this floor plan are generally taken at the farthest points of each given room (as if the room were a perfect rectangle), without regard for any cutouts or variations. Accordingly, the area of the actual room will typically be smaller than the product obtained by multiplying the stated length and width. All dimensions are estimates which will vary with actual construction, and all floor plans, specifications and other development plans are subject to change and will not necessarily accurately reflect the final plans and specifications for the development. All depictions of appliances, counters, soffits, floor coverings and other matters of detail, including, without limitation, items of finish and decoration, are conceptual only and are not necessarily included in each Unit.



MONACO

YACHT CLUB & RESIDENCES
MIAMI BEACH

Residence E

2 BEDROOMS
2.5 BATHROOMS
BI-LEVEL PRIVATE TERRACE

FLOOR 1

INTERIOR	1,799 SQ FT	167 SQ M
EXTERIOR	1,329 SQ FT	123 SQ M
TOTAL	3,128 SQ FT	290 SQ M



6800 INDIAN CREEK DRIVE
MIAMI BEACH, FL 33141
T. 305.800.6800

MONACOYACHTCLUBRESIDENCES.COM



ORAL REPRESENTATIONS CANNOT BE RELIED UPON AS CORRECTLY STATING THE REPRESENTATIONS OF THE DEVELOPER. FOR CORRECT REPRESENTATIONS, MAKE REFERENCE TO THIS BROCHURE AND TO THE DOCUMENTS REQUIRED BY SECTION 718.503, FLORIDA STATUTES, TO BE FURNISHED BY A DEVELOPER TO A BUYER OR LESSEE.

Stated square footages and dimensions are measured to the exterior boundaries of the exterior walls and the centerline of interior demising walls and in fact vary from the square footage and dimensions that would be determined by using the description and definition of the "Unit" set forth in the Declaration (which generally only includes the interior airspace between the perimeter walls and excludes all interior structural components and other common elements). This method is generally used in sales materials and is provided to allow a prospective buyer to compare the Units with units in other condominium projects that utilize the same method. For your reference, the area of the Unit, determined in accordance with these defined unit boundaries, is 1,799 sq ft. Measurements of rooms set forth on this floor plan are generally taken at the farthest points of each given room (as if the room were a perfect rectangle), without regard for any cutouts or variations. Accordingly, the area of the actual room will typically be smaller than the product obtained by multiplying the stated length and width. All dimensions are estimates which will vary with actual construction, and all floor plans, specifications and other development plans are subject to change and will not necessarily accurately reflect the final plans and specifications for the development. All depictions of appliances, counters, soffits, floor coverings and other matters of detail, including, without limitation, items of finish and decoration, are conceptual only and are not necessarily included in each Unit.



MONACO

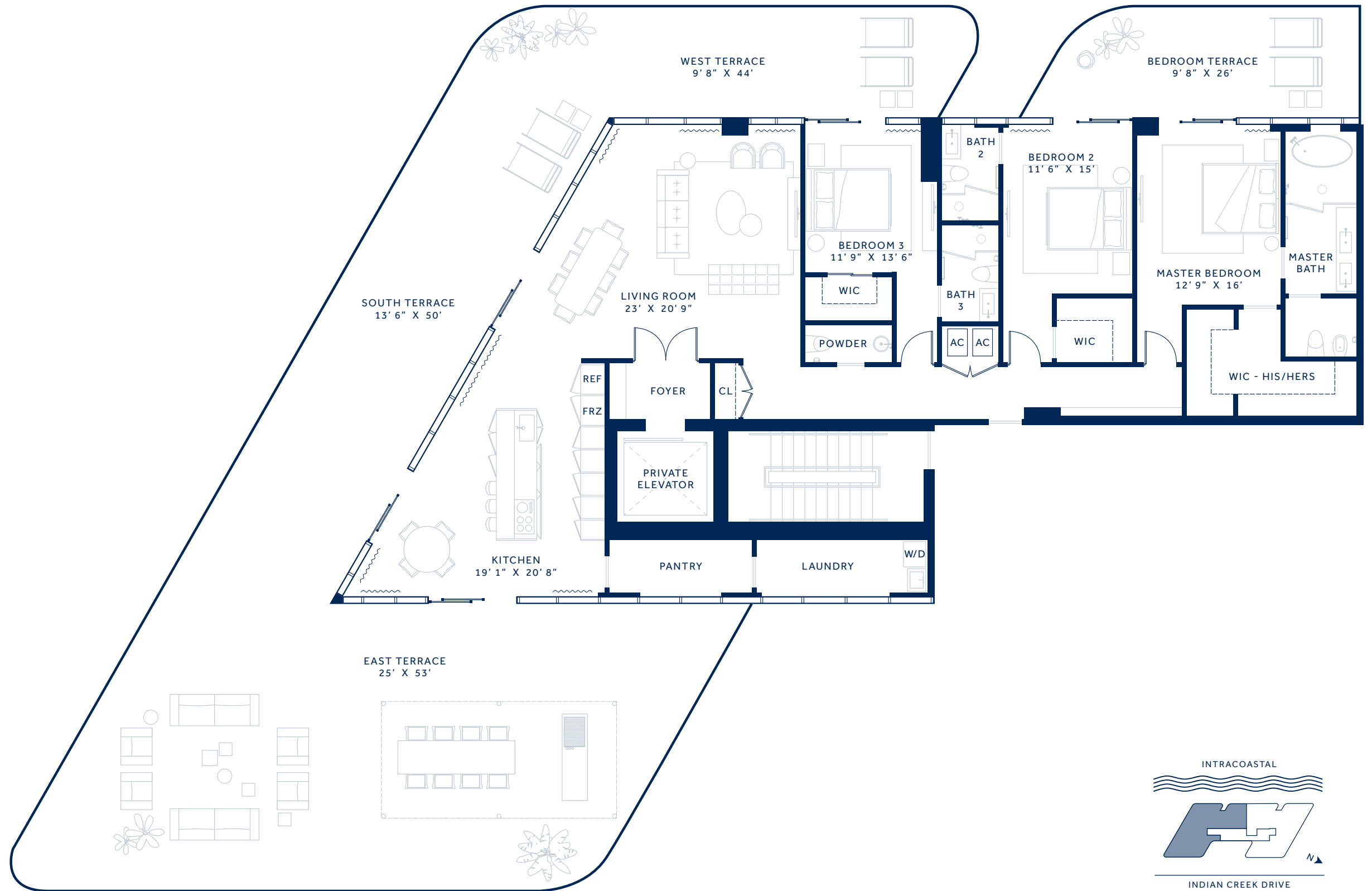
YACHT CLUB & RESIDENCES
MIAMI BEACH

Penthouse 1

3 BEDROOMS
3.5 BATHROOMS
PRIVATE TERRACE

FLOOR 11

INTERIOR	2,539 SQ FT	236 SQ M
EXTERIOR	2,888 SQ FT	268 SQ M
TOTAL	5,427 SQ FT	504 SQ M



6800 INDIAN CREEK DRIVE
MIAMI BEACH, FL 33141
T. 305.800.6800

MONACOYACHTCLUBRESIDENCES.COM



ORAL REPRESENTATIONS CANNOT BE RELIED UPON AS CORRECTLY STATING THE REPRESENTATIONS OF THE DEVELOPER. FOR CORRECT REPRESENTATIONS, MAKE REFERENCE TO THIS BROCHURE AND TO THE DOCUMENTS REQUIRED BY SECTION 718.503, FLORIDA STATUTES, TO BE FURNISHED BY A DEVELOPER TO A BUYER OR LESSEE.

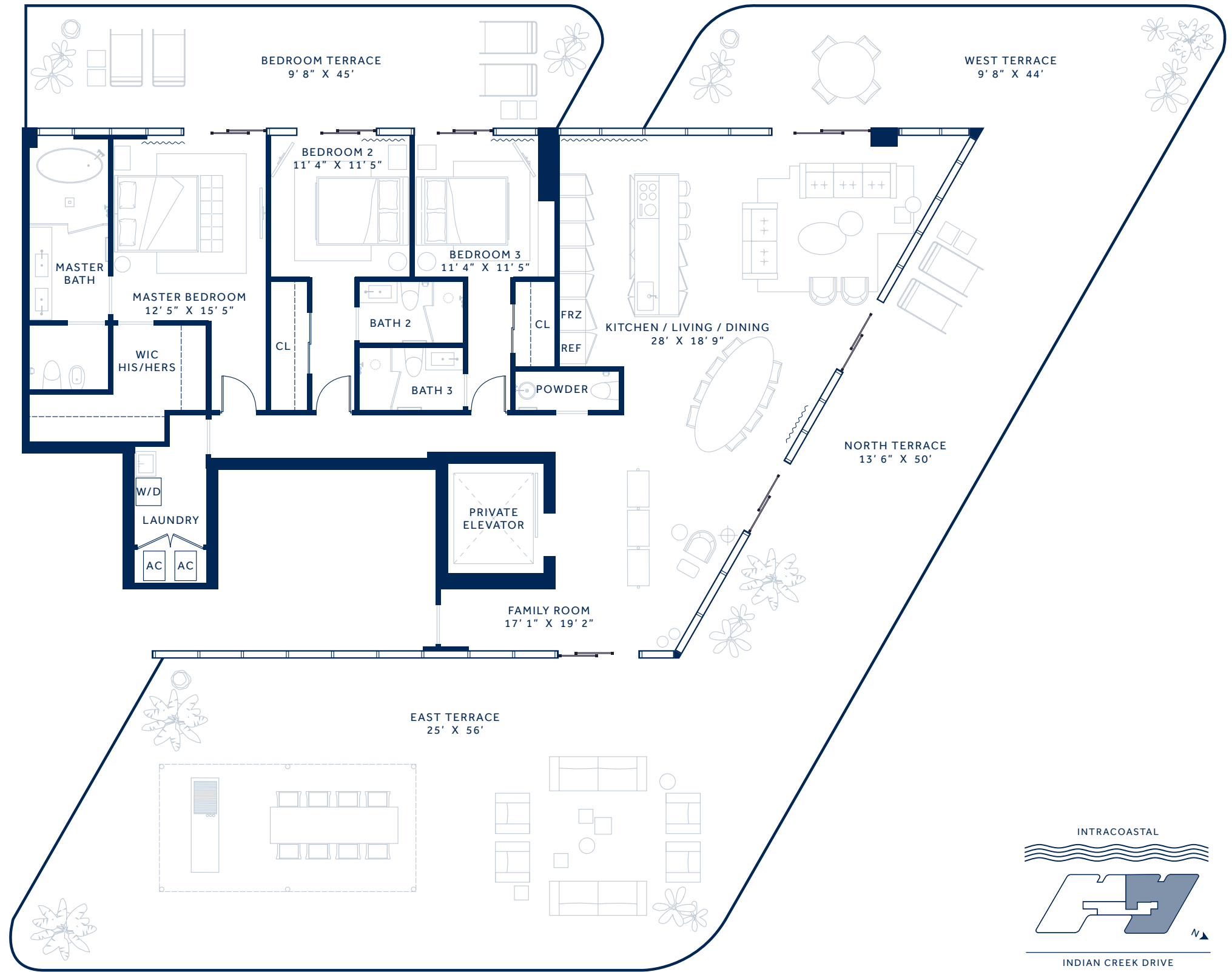
Stated square footages and dimensions are measured to the exterior boundaries of the exterior walls and the centerline of interior demising walls and in fact vary from the square footage and dimensions that would be determined by using the description and definition of the "Unit" set forth in the Declaration (which generally only includes the interior airspace between the perimeter walls and excludes all interior structural components and other common elements). This method is generally used in sales materials and is provided to allow a prospective buyer to compare the Units with units in other condominium projects that utilize the same method. For your reference, the area of the Unit, determined in accordance with these defined unit boundaries, is 2,539 sq ft. Measurements of rooms set forth on this floor plan are generally taken at the farthest points of each given room (as if the room were a perfect rectangle), without regard for any cutouts or variations. Accordingly, the area of the actual room will typically be smaller than the product obtained by multiplying the stated length and width. All dimensions are estimates which will vary with actual construction, and all floor plans, specifications and other development plans are subject to change and will not necessarily accurately reflect the final plans and specifications for the development. All depictions of appliances, counters, soffits, floor coverings and other matters of detail, including, without limitation, items of finish and decoration, are conceptual only and are not necessarily included in each Unit.

Penthouse 2

3 BEDROOMS
3.5 BATHROOMS
PRIVATE TERRACE

FLOOR 11

INTERIOR	2,278 SQ FT	212 SQ M
EXTERIOR	3,085 SQ FT	286 SQ M
TOTAL	5,363 SQ FT	498 SQ M



6800 INDIAN CREEK DRIVE
MIAMI BEACH, FL 33141
T. 305.800.6800

MONACOYACHTCLUBRESIDENCES.COM



ORAL REPRESENTATIONS CANNOT BE RELIED UPON AS CORRECTLY STATING THE REPRESENTATIONS OF THE DEVELOPER. FOR CORRECT REPRESENTATIONS, MAKE REFERENCE TO THIS BROCHURE AND TO THE DOCUMENTS REQUIRED BY SECTION 718.503, FLORIDA STATUTES, TO BE FURNISHED BY A DEVELOPER TO A BUYER OR LESSEE.

Stated square footages and dimensions are measured to the exterior boundaries of the exterior walls and the centerline of interior demising walls and in fact vary from the square footage and dimensions that would be determined by using the description and definition of the "Unit" set forth in the Declaration (which generally only includes the interior airspace between the perimeter walls and excludes all interior structural components and other common elements). This method is generally used in sales materials and is provided to allow a prospective buyer to compare the Units with units in other condominium projects that utilize the same method. For your reference, the area of the Unit, determined in accordance with these defined unit boundaries, is 2,278 sq ft. Measurements of rooms set forth on this floor plan are generally taken at the farthest points of each given room (as if the room were a perfect rectangle), without regard for any cutouts or variations. Accordingly, the area of the actual room will typically be smaller than the product obtained by multiplying the stated length and width. All dimensions are estimates which will vary with actual construction, and all floor plans, specifications and other development plans are subject to change and will not necessarily accurately reflect the final plans and specifications for the development. All depictions of appliances, counters, soffits, floor coverings and other matters of detail, including, without limitation, items of finish and decoration, are conceptual only and are not necessarily included in each Unit.